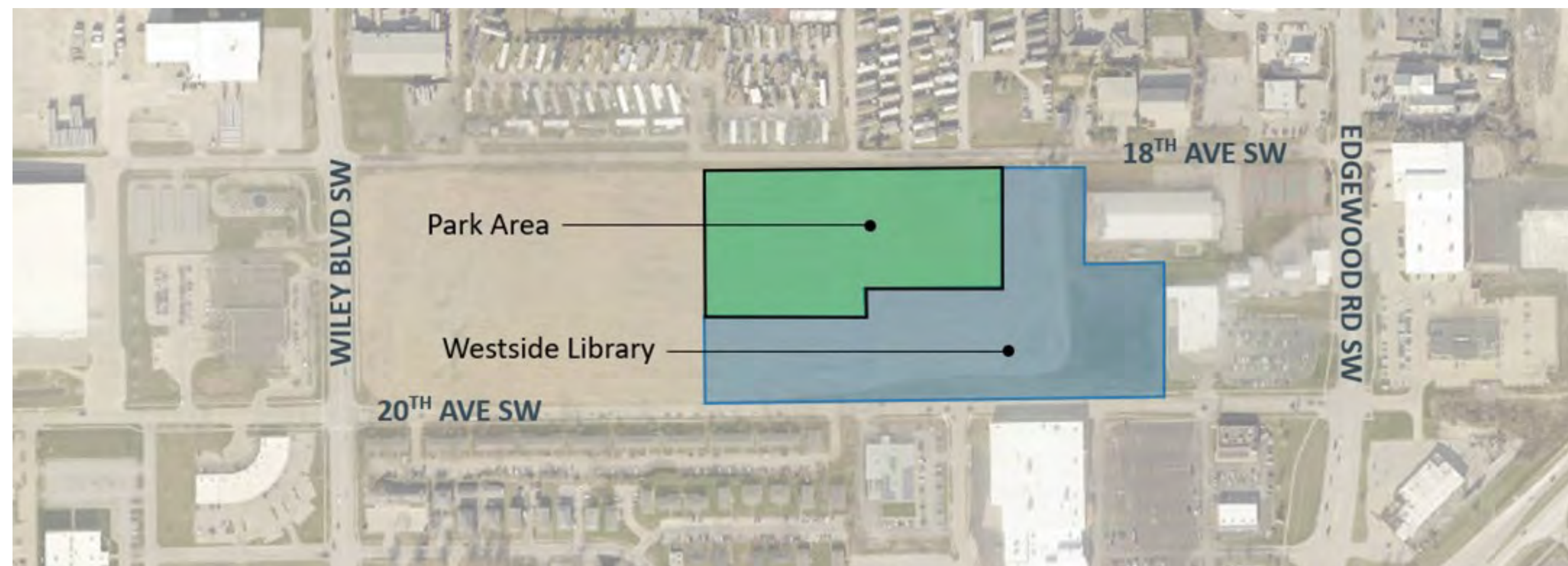
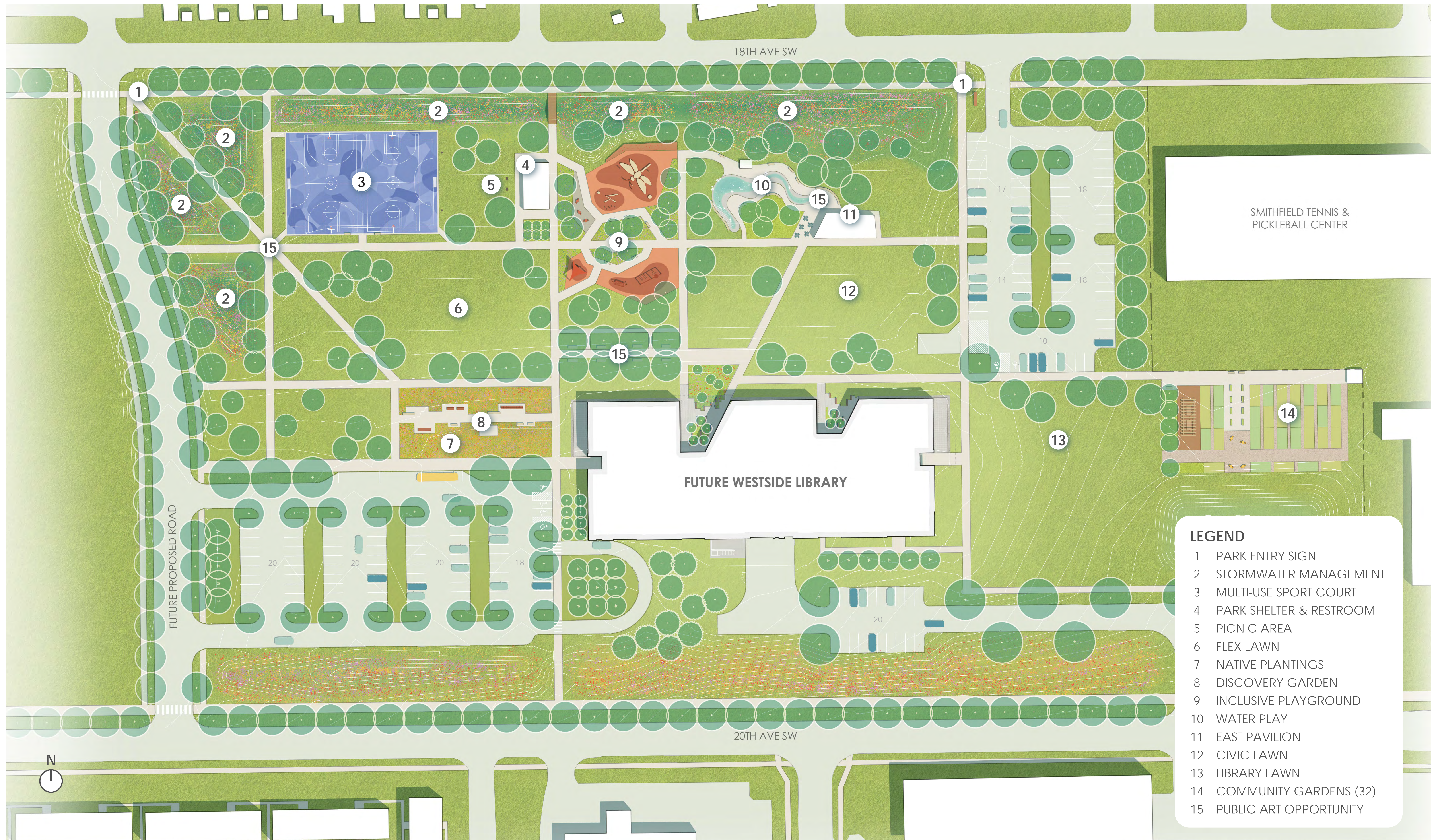


Westside Library Park Plan

In 2022, the Cedar Rapids Library took a significant step towards a permanent westside library location by purchasing land at the corner of Wiley Boulevard SW and 20th Avenue SW. The Library is working with the Cedar Rapids Parks and Recreation Department on integrating a public park into the site design with a vision for "a park in a library and a library in a park."





SMITHFIELD TENNIS & PICKLEBALL CENTER

FUTURE WESTSIDE LIBRARY

- LEGEND**
- 1 PARK ENTRY SIGN
 - 2 STORMWATER MANAGEMENT
 - 3 MULTI-USE SPORT COURT
 - 4 PARK SHELTER & RESTROOM
 - 5 PICNIC AREA
 - 6 FLEX LAWN
 - 7 NATIVE PLANTINGS
 - 8 DISCOVERY GARDEN
 - 9 INCLUSIVE PLAYGROUND
 - 10 WATER PLAY
 - 11 EAST PAVILION
 - 12 CIVIC LAWN
 - 13 LIBRARY LAWN
 - 14 COMMUNITY GARDENS (32)
 - 15 PUBLIC ART OPPORTUNITY

WESTSIDE LIBRARY PARK PLAN

November 2023





WESTSIDE LIBRARY PARK

View into Park from the Children's Area



WESTSIDE LIBRARY PARK

Aerial View Looking Northeast



SPORT COURT & FLEX LAWN

Multifunctional sports courts serve as basketball and futsal courts in the warmer months and can be transformed into an ice rink in the colder months. The sports courts are buffered by bioswale plantings to the north and open up into a multi-purpose lawn to the south. A nearby park shelter and restroom provide space for seating, gathering, and events.

“We should have a dedicated green space for soccer, frisbee, or playing catch.”
—Online Survey Response



WESTSIDE LIBRARY PARK

View Looking Towards Multi-Use Sport Courts & Flex Lawn



WATER PLAY

Inspired by nature, the water play area integrates misters and jets to create a dynamic space for children of all ages and abilities. Subtle grade changes along the path provide unique opportunities for experiential play. Perimeter plant material creates opportunities for shade, while the nearby plaza and park pavilion afford flexible space for both small gatherings and larger events.

"I think it would be great to have unique play spaces for the southwest side!
A community jewel!"
—Online Survey Response

"A natural-looking water feature would be so cool!"
—Online Survey Response

WESTSIDE LIBRARY PARK

View of Natural Water Play Feature

